

JaecoPak™

Packed Plunger Metering Pumps (0.38 to 150 GPH)

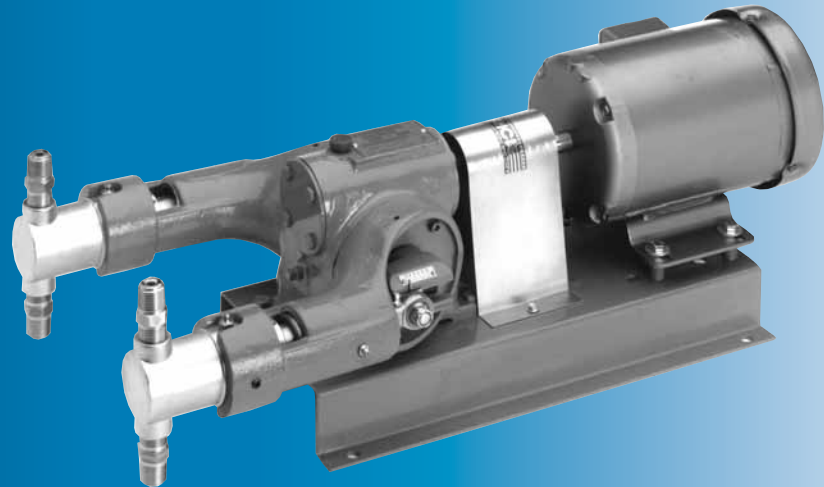
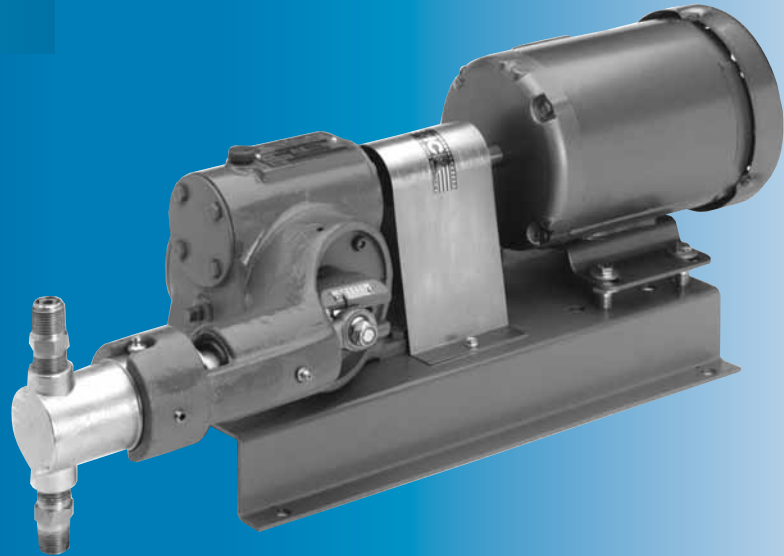
Features/Benefits

- Streamlined design and rigid construction provide a low-cost, uninterrupted, trouble-free service for the continuous accurate metering of chemicals and solutions.
- Positive displacement supplies a simple and virtually maintenance-free approach to accurate chemical feed.
- Available in both simplex and duplex models. Field convertible from simplex to duplex.
- Stroke rate easily automated using variable-speed drive.
- Capacity is manually adjustable, but only while pump is stopped, as a safety precaution and for tamper resistance.
- Stroke length is adjustable for a turn-down ratio of 10:1.
- Available with or without motor.
- Oil bath gear lubrication eliminates the maintenance required by auxiliary oil systems.
- Single ball check valve, standard on both suction and discharge side of the pump, provides accurate metering and fast response. Valve ball turns with fluid flow, constantly presenting a new face to the seat, and is therefore self-cleaning.
- Because it is a true positive displacement pump, a safety relief valve on all closed loop systems is required to prevent possible over pressuring the discharge line.
- Packing adjustment screwed gland nut ensures even take-up and fewer packing problems.
- Integral lantern ring for packing lubricant may be used for internal purging when handling crystallized, corrosive or other hazardous liquids.
- Pump arms can be reversed to reduce footprint.
- Duplex pumps can have different size pistons.
- Pistons are normally 180° out of phase, but can be synchronized so that two fluids are pumped simultaneously (i.e. resin and hardener in a fiberglass plant).
- Accuracy of $\pm .5\%$ at steady state.
- All units come epoxy painted, completely assembled on a base plate and have been fully tested.

Materials of Construction

Liquid End: 316 Stainless Steel, Alloy 20

Seals: Neoprene, PTFE, Viton®



Options

- Double ball check valves with or without spring-loaded balls.
- Purge-port plugs, available in cylinder end, can be used to bleed air during and after start-up and to solvent-purge the liquid end. They also provide easy access to the cylinder without breaking pipe connections.
- 440 hardened plunger for abrasive fluids.

Motor Options

- Electrical
- Gas
- Air
- Belt-driven

Accessories

- Safety relief valves
- Back pressure valves
- Calibration columns
- Pulsation dampers

Models

Model# ⁽¹⁾	Maximum Capacity ⁽²⁾				Maximum Pressure ^(4,5)			
	Simplex		Duplex		1/3 HP		1/2 HP	
	GPH	LPH	GPH	LPH	PSIG	Kg/cm ²	PSIG	Kg/cm ²
104-023- ⁽³⁾	0.38	1.44	0.76	2.88	1500	105.4	2000	140.6
104-035-	0.58	2.19	1.16	4.39	1500	105.4	2000	140.6
104-048- ⁽³⁾	0.78	2.95	1.56	5.90	1500	105.4	2000	140.6
104-058-	0.98	3.70	1.96	7.40	1500	105.4	2000	140.6
104-072-	1.18	4.46	2.36	8.92	1500	105.4	2000	140.6
104-086-	1.48	5.60	2.96	11.20	1500	105.4	2000	140.6
104-115-	1.98	7.49	3.96	14.98	1500	105.4	2000	140.6
106-023- ⁽³⁾	0.87	3.29	1.74	6.58	1500	105.4	2000	140.6
106-035-	1.31	4.95	2.62	9.91	1500	105.4	2000	140.6
106-048- ⁽³⁾	1.77	6.69	3.54	13.39	1500	105.4	2000	140.6
106-058-	2.20	8.32	4.40	16.64	1500	105.4	2000	140.6
106-072-	2.67	10.10	5.34	20.20	1500	105.4	2000	140.6
106-086-	3.33	12.60	6.66	25.20	1500	105.4		
106-115-	4.45	16.84	8.90	33.68	1300	91.4		
108-023- ⁽³⁾	1.55	5.86	3.10	11.72	1500	105.4		
108-035-	2.34	8.85	4.68	17.70	1500	105.4		
108-048- ⁽³⁾	3.16	11.96	6.32	23.92	1275	89.6		
108-058-	3.92	14.83	7.84	29.66	1390	97.7		
108-072-	4.75	17.98	9.50	35.96	1180	83.0		
108-086-	5.92	22.40	11.84	44.80	980	68.9		
108-115-	7.91	29.94	15.82	59.88	780	54.8		
110-023- ⁽³⁾	2.43	9.19	4.86	18.39	1350	94.9		
110-035-	3.65	13.81	7.30	27.63	1250	87.9		
110-048- ⁽³⁾	4.94	18.69	9.88	37.39	820	57.6		
110-058-	6.13	23.20	12.26	46.40	890	62.6		
110-072-	7.42	28.08	14.84	56.17	760	53.4		
110-086-	9.25	35.01	18.50	70.02	630	44.3		
110-115-	12.37	46.82	24.74	93.64	500	35.2		
112-023- ⁽³⁾	3.50	13.24	7.00	26.49	940	66.1		
112-035-	5.26	19.91	10.52	39.82	870	61.2		
112-048- ⁽³⁾	7.12	26.95	14.24	53.90	560	39.4		
112-058-	8.83	33.42	17.66	66.84	670	47.1		
112-072-	10.69	40.46	21.38	80.93	520	36.6		
112-086-	13.32	50.42	26.64	100.84	440	30.9		
112-115-	17.81	67.41	35.62	134.82	350	24.6		
112-172	31.00	117.33	62.00	234.66	200	14.1		
120-023- ⁽³⁾	10.00	37.85	20.00	75.70	235	16.5		
120-035-	15.00	56.77	30.00	113.55	215	15.1		
120-048- ⁽³⁾	20.00	75.70	40.00	151.41	165	11.6		
120-058-	25.00	94.63	50.00	189.26	200	14.1		
120-072-	30.00	113.55	60.00	227.11	170	12.0	240	16.9
120-086-	37.00	140.05	74.00	280.11	150	10.5	205	14.4
120-115-	50.00	189.26	100.00	378.53	120	8.4	165	11.6
120-172-	75.00	283.89	150.00	567.79	75	5.3	100	7.0

1. Jaeco model numbers consist of 10 digits. See explanation.
2. Flow rates are based on water at maximum rated pressure.
3. This pump requires an 1140 rpm motor.
4. For steel construction, maximum temperature is 350°F.
5. For Model #120-172, maximum pressure at 3/4HP is 125 PSIG. (8.8 Kg/cm²)

JaecoPak Model #s

A BB - CCC - D E F G - (H)

A — 1 = JaecoPak

BB — Plunger Dia.: 04 = 1/4", 06 = 3/8",
08 = 1/2", 10 = 5/8", 12 = 3/4",
20 = 1 1/4"

CCC — Speed in strokes per
minute

D — S = Simplex, D = Duplex

E — Liquid End Material
2 - 316 Stainless Steel
3 - Alloy 20

F — Packing: N = Neoprene, T = PTFE,
V = Viton

G — Motor Horse Power
2 - 1/3 HP
3 - 1/2 HP
4 - 3/4 HP
Y - less motor

(H) — Options: Consult factory

Warranty

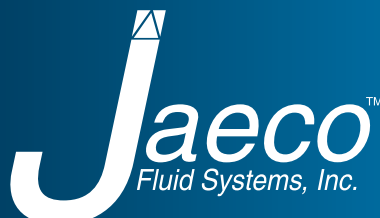
Jaeco pumps are warranted for three years against defects in parts or workmanship from day of shipment for all parts with the exception of the normal wear items, which are the packing and the check valves. Packing and check valves are warranted for one year from date of shipment.

Shipment

Most JaecoPak pumps can be shipped within 48 hours after receipt of order. If required, spare parts can be shipped the same day when the order is received before noon.

How to Order

Determine type of Jaeco pump to use. Select appropriate model from capacity/pressure chart. Or, contact your Jaeco representative with the following information: fluid name, concentration and compatibility; fluid properties – viscosity, temperature, vapor pressure, particle matter size and percent; maximum and minimum operating capacities and type of capacity adjustment required; maximum discharge pressure and minimum available suction pressure; and type of motor drive preferred and available power source. Also include additional pertinent information such as pumping system tolerance for pulsating flow/pressure and liquid's degree of abrasion or corrosion.



17 Lee Boulevard, Suite D • Malvern, PA 19355-1234
Toll Free: 1-877-778-3456 • Phone: 610-407-7207
Fax: 610-407-7211 • www.jaecofs.com